

Placement Presentation

**Presented by
Hui Wai Yi Janice**



Agenda

- Placement Introduction
- Project Background Information
- Project Details
- Other working areas
- Achievements and Feelings



Placement Introduction

- CLP Hong Kong Limited
- Intern of Castle Peak Operations Department
- Data Logging Process Enhancement Project
- Mentor: Mr. Fung Wai Hung
- Project Holder: Mr. Dennis Chan



Project Background Information

- Log sheets are used by the operators to record the data of the plant
- The data are very important for monitoring the plant status
- Log sheets are kept in papers and some are kept in Excel files



Problems

- Logs kept in paper are easy to be damaged
- Waste paper and storage space
- Double handling of the data
- Stored data are not easy to retrieve
- Trends are not easily predicted
- Data stored in Excel is not secure



Project Details

Phrase One

- All log sheets are convert to Electronic data log sheets
- Enhanced function in the log sheets

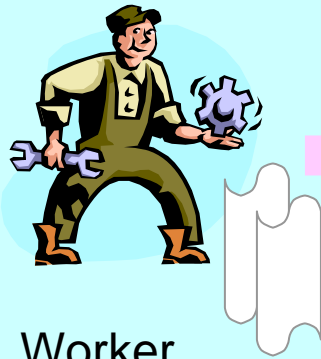
Phrase Two

- New data logging system is introduced to festinate the procedure
- Users will use PDA instead of papers to take the readings on plant
- Data will be stored in PI Server

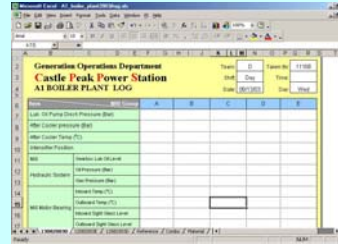


Diagram

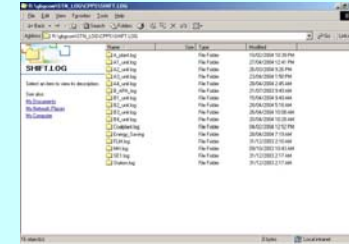
Phrase One



Worker



Input data from local computer



Data Stored in Network Drive

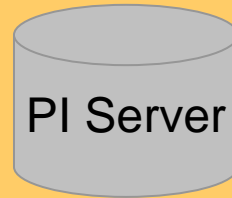
Phrase Two



Worker



PI Manual Logger



PI Server



Report & Trend



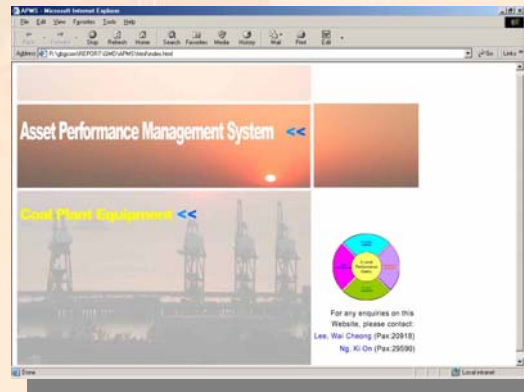
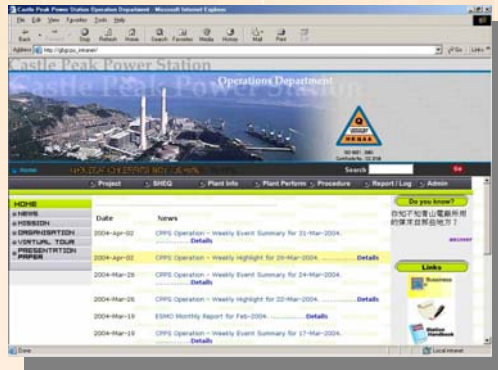
Improvements

- All the logs have been changed to electronic
- Working procedure is simplified
- Data can be retrieved from the database anytime
- Report and trends are easily generated and data are kept in a more secure way



Other working areas

- Castle Peak Operations Website refurbishment
- Asset Performance Management System (APMS) trail website development
- GBG Open Day booth design (CPPS/BPPS)
- GBG Annual Dinner Graphic Design



Achievements

**Personal growth and
development**

Leadership

**Transitional
experience from
academic to
work life**

Success

**Exposure to
work culture**

**Social
exposure**

